

V6 Standard

Modular solutions of
high resolution printing

Digital Printing
for Industry 4.0

Industrial Console

Possibility of multiple
head blocks

Customized print height

Integrated message editor



CHARACTERISTICS

- Opposite faces
- Different heights
- Different lines (independent)
- Native resolution of 180dpi
- Multiple densities and contrasts
- High quality bar codes. GS-1 standard
- Intuitive user environment
- Actual on-screen preview of the message to be printed (WYSIWYG)
- Oil based and UV LED inks
- External hardware message selection
- Integration with post-print bar code reader
- Scripting for full customisation of jobs

ADVANTAGES

- Customisation. Short print runs. Promotions
- Reduction of stock of pre-printed containers
- Practically zero maintenance
- No stoppages to change consumables
- Printing on ramps of any inclination



SPECIFICATIONS

PRINT

Print head resolution:
180 dpi

Speed:
60 m/min @ 180dpi
0.2-192 m/min depending resolution

Height:
72 mm / 140 mm per block to 180

Maximum length: +100 m.

Densities: 3 levels

Font type: True Type™, Open Type™ fonts

Character coding: Unicode

Bar codes: GS-1 standard
EAN/UPC, ITF-14, GS1-128, GS1 Data-matrix, GS1 QR Code

Printing of variable fields:
Of user (customised fields) and automatic fields (expiry dates, shift codes, counters)

ENVIRONMENTAL

Work environment:
5 - 45 °C (41 - 1113 °F)

Protection:
IP 52 (console)

COMMUNICATIONS

Own communications protocol
Windows™ Driver
Connectivity with external database and ERP Remote assistance

ELECTRICS

Power supply:
Selectable by switch
88-132 VAC | 176-264 VAC
47-63 Hz, 1200 W (max)

Inputs (per block):
1 x printing signal
1 x encoder

Outputs (per block):
2 x programmable
2 x status indicators

Communication ports:
1 x RS-232
1 x RS-422 / 485 / 232 (optional)
2 x Ethernet 1Gb
1 x USB
1 x WiFi (optional)

UV LED



Printing immediately sets Useful, long life span with low maintenance Energy efficient

Several heights available
Instant on/off
Safety through double activation input
Adjustable intensity

INKS

Oil-based and UV LED inks - MOF
Colors:
Black, Black (high contrast), Cyan, Magenta, Yellow, Others (consult)



USER INTERFACE

15" colour touchscreen
Selection of preview messages
WYSIWYG
Diagnostics
Integrated message editor

OPTIONS

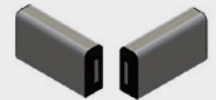
Encoder, post-printing bar code verification, alarm beacons, bar code reader for selecting products, external message selection

PRINTABLE PRODUCTS

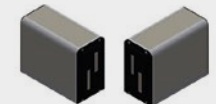
Porous, glossy, coated cardboard, paper, textiles, wood, plastic, metal, foam, EPS...

CONFIGURATIONS

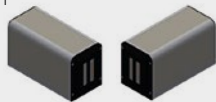
V6 Standard 70 D:
180 dpi
140 mm
DUO



V6 Standard 140 D:
180 dpi
140 mm
DUO



V6 Standard CLP 70 D:
180 dpi
70/70 mm
2 Colors
DUO



Orientation options:
Lateral - Upjet - Downjet



PYMEINNOVADORA



MARKTEC™
Automated Marking, Labeling & Packaging Systems

8785 Ag Park Drive North
Batavia, NY 14020
Tel: 585-344-4102 | Fax: 585-344-4109
www.marktecprods.com

f i n s

V.L. Limitronic, S.L.
Calle Andorra 19
Pol. Ind. Ciudad del Transporte II
12006 Castellón - Spain
Tel. (+34) 964 562 199
info@limitronic.com



limitronic.com
linkedin.com/company/limitronic
youtube.com/Limitronic