

# Limitag V6 COLOUR

All colour printing

On-line decoration and coding

Modular solutions

Industrial console

Multiple possibilities for colour blocks

Customised printing height

Integrated message editor



## CHARACTERISTICS

- CMYK system for colour printing
- Native resolution of 180dpi or 360dpi
- Multiple densities and contrasts.
- High quality bar codes. GS-1 standard
- Intuitive user environment.
- Actual on-screen preview of the message to be printed (WYSIWYG)
- Oil based and UV LED inks.
- Remote assistance.
- Integration with post-print bar code reader.
- Scripting for full customisation of jobs.
- Multiple integrated colour profiles

## ADVANTAGES

- Box customisation in real time.
- Reduction of stock of pre-printed containers.
- Flexibility in short print runs and promotions.
- Practically zero maintenance.
- No stoppages to change consumables.
- Coding and decoration with just one piece of equipment.



**Graphic Solid Inks, Inc. (GSI)**  
6845 Shiloh Rd E Alpharetta,  
GA 30005  
Ph: 678.264.4008  
Email: info@gsinks.com  
**gsinks.com**

## SPECIFICATIONS

### PRINT

**Print head resolution:**

180 dpi  
360 dpi

**Speed:**

60 m/min @ 360dpi  
0.2 - 192 m/min depending on the resolution

**Height:**

72 mm  
140 mm

**Maximum length:** +100 metres

**Densities:** 3 levels

**Font type:**

True Type™, Open Type™ fonts

**Character coding:** Unicode

**Bar codes:**

GS-1 standard  
EAN/UPC, ITF-14, GS1-128, GS1 Datamatrix,  
GS1 QR Code

**Printing of variable fields:**

Of user (customised fields) and automatic  
fields (expiry dates, shift codes, counters)

**Orientation:**

Vertical (side of the product)  
Horizontal (top of the product)

**Encoder:**

Automatic speed calibration

### ELECTRICS

**Power supply:**

Selectable by switch  
88-132 VAC | 176-264 VAC  
47-63 Hz, 1200 W (max)

**Inputs (per block):**

1 x printing signal  
1 x encoder

**Outputs (per block):**

2 x programmable  
2 x status indicators

**Communication ports:**

1 x RS-232  
1 x RS-422 / 485 / 232 (optional)  
2 x 1GB Ethernet  
1 x USB  
1 x Wi-Fi (Optional)

### ENVIRONMENTAL

**Work environment:**

5 - 45 °C (41 - 113 °F)

**Protection:**

IP 52 (console)

### USER INTERFACE

15" colour touchscreen  
Selection of preview messages  
WYSIWYG  
Diagnostics  
Integrated message editor

### COMMUNICATIONS

Own communications protocol  
Windows™ Driver  
Connectivity with external database and ERP  
Remote assistance

### PRINTABLE PRODUCTS

Porous, glossy, coated cardboard, paper,  
textiles, wood, plastic, metal, foam, EPS...

### OPTIONS

Post-printing bar code verification, alarm  
beacons, bar code reader for selecting  
products, external hardware message  
selection

### OTHER

**Weight:**

38 kg (console)  
26 kg (C L70)

**Consumables:**

UV LED inks

**Colours:**

Black (high contrast)  
Cyan  
Magenta  
Yellow

## Limitag V6 COLOUR

UV LED

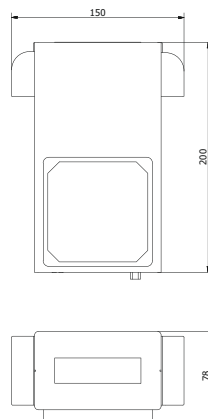
UV LED



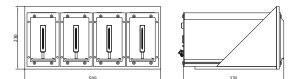
Printing immediately sets  
Useful, long life span with low maintenance  
Energy efficient

### FEATURES

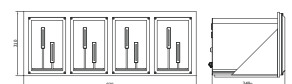
Several heights available  
Instant on/off  
Safety through double activation input  
Adjustable intensity



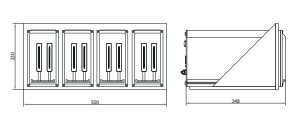
**V6 C L70:**  
180 dpi  
70 mm  
CMYK



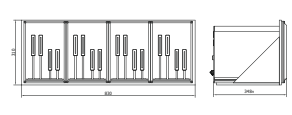
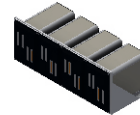
**V6 C L140:**  
180 dpi  
140 mm  
CMYK



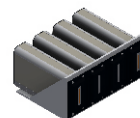
**V6 C H70:**  
360 dpi  
70 mm  
CMYK



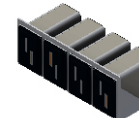
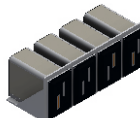
**V6 C H140:**  
360 dpi  
140 mm  
CMYK



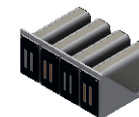
**V6 C L70 D:**  
180 dpi  
70 mm  
CMYK



**V6 C L140 D:**  
180 dpi  
140 mm  
CMYK



**V6 C H70 D:**  
360 dpi  
70 mm  
CMYK



**V6 C H140 D:**  
360 dpi  
140 mm  
CMYK

