



Shrink Sleeve Solutions
To Make Your Product **Stand Out**



LX-100

Shrink Sleeve Labeling & Tamper Evident Banding

COST EFFECTIVE SHRINK LABELING

The LX-100 Shrink Sleeve Label and Tamper Evident Band applicator from American Film & Machinery is an economy level labeling machine designed for middle, full body, and full body and cap applications. The LX-100 is designed for low to moderate production rates and is a perfect solution for industries including food and beverage, pharmaceutical, nutraceutical, health and beauty, consumer goods, chemical, and other manufactured goods.

INDUSTRIAL STRENGTH DESIGN, USER FLEXIBILITY

The LX-100 is an efficient single-head mandrel style labeling system engineered to meet the demand of your workflow. Designed for single shift operation, LX-100's simple and low maintenance design allows for quick film change and maximum uptime. LX-100's compact housing is constructed from 304 grade stainless steel to provide strength and reduce vibration while offering quiet operation. Product runs are programmed with the user-friendly touch-screen control interface HMI, featuring standard and custom menus that can be password protected for an added layer of security.

ENGINEERED FOR VERSATILITY

Every LX Series machine is designed with servo driven, PLC controlled label drive rollers, cutter assembly, and label shooting wheels to provide accurate and consistent shrink sleeve labeling. LX-100 has been engineered to handle oval and round containers made of plastic, glass, or metal at

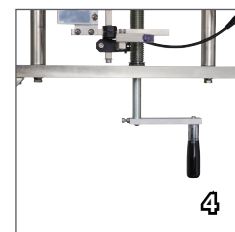
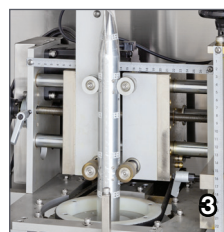
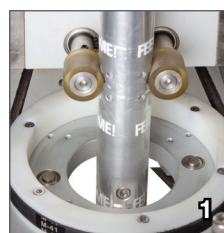
speeds of up to 80CPM. Users also have the option of purchasing additional mandrels for non-cylindrical containers. The single-blade centrifugal cutting mechanism provides extremely smooth, even cutting of film thickness of 35 microns up to 70 microns.

FAST AND EFFECTIVE

The LX-100 also comes with our quick change system for switching mandrels with a turn of a knob. Along with the mandrel, the cutter assembly has only two levers to turn, keeping your downtime to a minimum.

THE RIGHT CHOICE

Rugged design. Maximum uptime. Lower cost of ownership. Your benefits go on and on. When it comes to shrink sleeve and tamper band application, rely on American Film & Machinery to provide the right solution for your shrink sleeve labeling needs.



- 1. Smooth and Even Film Cutting**
The single-blade centrifugal cutting mechanism provides smooth and even cutting at high speeds
- 2. Control Interface**
Product runs are programmed with the user-friendly touchscreen control interface
- 3. In-line Single-Head Mandrel**
The bullet style mandrel is ideal for oval and round containers made of plastic, glass, or metal
- 4. Simple Conveyor Height Adjustment**
Easy-to-use hand crank allows for ideal height adjustment on virtually any conveyor

TECHNICAL SPECIFICATIONS	
Power	3 Phase 220/380/400/440V 50/60Hz
Film Thickness	0.035mm - 0.07mm
Film Lay Flat	40mm - 160mm
Cut Length	40mm - 200mm
Machine Dimensions	904mm (W) x 1462.5mm (L) x 1540-1960mm (H) 35.6" (W) x 57.6" (L) x 60.6" - 77.2" (W)
Speed	20 - 80CPM

Make your products stand out among the competition with AFM Shrink Sleeves and Tamper Evident Banding



©2020 American Film & Machinery. Specifications subject to change. All trademarks are the property of their respective owners. Product samples shown illustrate the capabilities of AFM and do not necessarily represent a business relationship between the companies.



7041 Boone Avenue North, Brooklyn Park, MN 55428
(714) 974-9006 www.afmsleeves.com
info@afmsleeves.com

STANDARD COMPONENTS:

- Round cylindrical mandrel
- Cutter assembly
- Single timing screw unit
- Photo eye for registered cutting
- Label brush down device
- Single roll unwind and tension control

OPTIONAL FEATURES & COMPONENTS

- Mandrel for non-cylindrical containers
- Vertical and T perforation units
- Label tamp down device
- Date code / lot code printer
- Dual timing screw assembly



ENGAGE technologies corporation

042220 Rev A