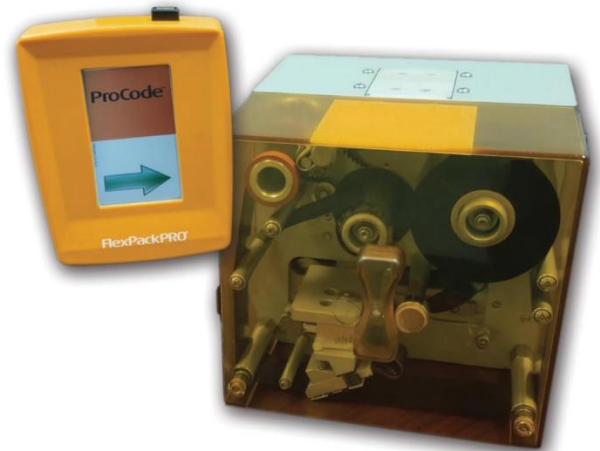


FlexPackPRO[®] All-Electric SERIES

Thermal Transfer Overprinters



RUGGED

- Built with 7000 series aircraft-grade treated aluminum alloy and stainless steel.
- Vertically-integrated parts manufacturing to ensure quality control and precision assembly.
- Heavy-duty installation brackets and rollers crafted in-house to customer specifications.
- Robust long-life mechanical design requiring zero preventative maintenance.

NO AIR REQUIRED!



RELIABLE

- Clutchless ribbon drive and tension control design maximize uptime and long-term performance.
- Precision printhead assembly and highly durable, long-life replacement parts.
- 300dpi Kyocera[®] printheads on self-leveling mounts provide superior code quality through every run.

VALUE

- Color LCD touchscreen controllers with WYSIWYG print preview come standard with all models.
- Full-featured, highly-intuitive ProCode[®] image design software comes free with all systems.
- Reasonably-priced ribbons, parts and service provide the industry's lowest total cost of ownership.
- On average, complete FlexPackPRO systems list for 25-40% lower than competitive TTO systems of comparable quality.



Rugged. Reliable. Value.[™]

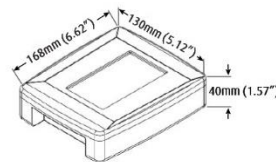
FlexPackPRO[®]

Thermal Transfer Overprinting

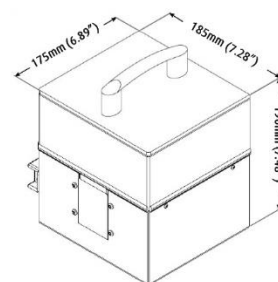
AE SERIES

| Models: | 130AEi | 210AEi |
|--|--|--|
| Printer Mode: | Intermittent | Intermittent |
| Maximum Print Area (Width x Length): | 32 x 40 mm (1.26" x 1.57") | 53 x 40 mm (2.06" x 1.57") |
| Print Resolution: | 300 dpi | 300 dpi |
| Print Speed: | 300 mm/s (11.8 in/s) | 300 mm/s (11.8 in/s) |
| Ribbon Widths: | Min: 20 mm (0.8") Max: 35 mm (1.38") | Min: 20 mm (0.8") Max: 55 mm (2.16") |
| Maximum Ribbon Length: | 680 m (2,230') | 680 m (2,230') |
| Ribbon Saver Features: | Yes | Yes |
| Ribbon Loading: | Direct (Non-Cassette) | Direct (Non-Cassette) |
| Standard User Interface: | 4.3 inch color LCD touchscreen | 4.3 inch color LCD touchscreen |
| Software: | ProCode™ Professional | ProCode™ Professional |
| Barcodes: | All | All |
| Standard Communication: | USB, Ethernet, RS232 | USB, Ethernet, RS232 |
| Printer Dimensions (Height x Width x Depth): | 175 mm x 185 mm x 190 mm (6.89" x 7.28" x 7.48") | 175 mm x 190 mm x 210 mm (6.89" x 7.48" x 8.27") |
| Printer Weight: | 5.6 kg (12.3 lbs) | 5.6 kg (12.3 lbs) |
| Power Supply: | 110 - 120 / 200 - 240 VAC, 50 / 60 Hz | 110 - 120 / 200 - 240 VAC, 50 / 60 Hz |
| Operating Temperature: | 5° - 50° C (41° - 122° F) | 5° - 50° C (41° - 122° F) |

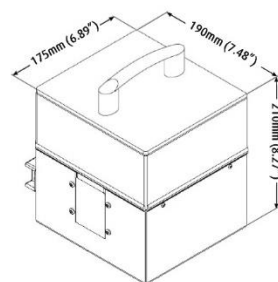
Controller:



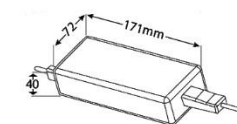
130AEi Printer:



210AEi Printer:



Power Supply:



Specifications deemed accurate at the time of publication, and are subject to change without notice. Performance may differ based on individual application.

FlexPackPRO[®]

Thermal Transfer Overprinting

CORPORATE LOCATIONS
 GEORGIA | ILLINOIS | NEW JERSEY

(800) 758-9219
gopro@flexpackpro.com
www.flexpackpro.com

MARKTEC[™]
 Automated Marking, Labeling & Packaging Systems

8785 Ag Park Drive North
 Batavia, NY 14020
 Tel: 1-800-627-5832 | Fax: 585-344-4109

www.marktecprods.com