



World Class Printing Systems
for **Real World Applications**



CO Pilot 256

INCREASED APPLICATION VERSATILITY

The CoPilot 256 ink jet printer is designed to print superior quality hi-resolution characters on either porous or non-porous surfaces. With up to 1.4" of print height per head and the ability to print on both sides of the substrate in a single pass, the CoPilot 256 is designed to work as an integral part of your day-to-day packaging operation.

USER-FRIENDLY SYSTEM

CoPilot 256's 4.3" full color touchscreen provides access to the system's internal messages and print functions. Messages are created and edited on Squid Ink's easy-to-use Orion™ PC Software and transferred via USB, ethernet, wireless, or optional Windows® tablet. The tablet is ideal for users who want message creation and editing functionality on the production floor. For larger applications, an unlimited number of CoPilot 256 printing systems can be connected via ethernet or wireless network and controlled through one central Orion™ PC.

INDUSTRIAL DESIGN, USER FLEXIBILITY

The system is capable of running our extensive library of oil-based, solvent-based, or UV curable inks to print up to 185 dpi at 135ft/min on a variety of substrates. For non-porous applications, users have the option of utilizing Squid Ink's solvent-based or UV curable inks to print on a variety of non-porous products like coated cartons, plastics, glass, shrink wrap, metals, and more. Squid Ink also offers pigmented inks for printing on dark colored objects. Squid Ink's PZ-1000 ink for porous substrates offers ultra-low maintenance, eliminating the need for auto-priming functions and offering better ink utilization than competitive systems.

ENGINEERED FOR MAXIMUM UPTIME

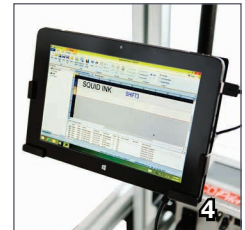
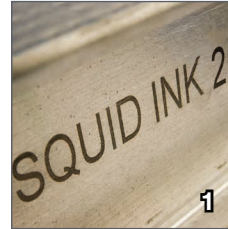
The CoPilot 256 is designed to meet the harsh demands of your application. The printer features a durable touchscreen, industrial strength printhead construction, and simple ink delivery system designed for industrial applications, not office applications. You can be confident that CoPilot 256's rugged design will withstand the most abusive industrial environments while providing superior quality print. The CoPilot also features a large 500ml cartridge or bag ink system. The generous ink volume allows users to keep their line running, reducing downtime and maximizing ROI.

INK JET CODING AT THE RIGHT PRICE

As one of the newest additions to Squid Ink's growing family of marking and coding systems, the CoPilot 256 gives users more choices for their coding applications. Any way you look at it, Squid Ink's CoPilot 256 provides users with an affordable solution to meet their ink jet coding needs.

THE RIGHT SOLUTION

Rugged design. Low maintenance operation. User friendly software. Low cost of ownership. Your benefits go on and on. When it comes to industrial ink jet printing, rely on Squid Ink to provide the right solution for your coding and marking needs.



1) The CoPilot 256 utilizes oil-based, solvent-based, or UV curable inks for printing on a wide range of porous or non-porous substrates.

2) A 4.3" full color touchscreen provides access to the systems internal messages and print functions.

3) The optional bag ink agitator system is an ideal solution for users printing with pigmented inks.

4) Manage messages wirelessly using an optional Windows® tablet with Orion Software.™

SYSTEM SPECIFICATIONS:

- **Print Technology** - Piezo impulse printhead technology
- **Maximum Print Height** - 1.4" (3.6 cm) per printhead, 2.8" (7.1 cm) total
- **Vertical Print Resolution** - 185 dpi capable of printing razor-sharp graphics, small character text, and scannable bar codes
- **Horizontal Print Resolution** - 205 dpi
- **Print Speed** - Up to 135 feet/min. (41 m/min.) @ 205 dpi
- **Time & Date** - Internal real time clock with battery back-up
- **Product Sensor** - External diffuse beam photocell standard
- **Communication Interface** - One USB host and one Ethernet input
- **Touchscreen** - 4.3" (10.9 cm) full color touchscreen display
- **Ink Cartridge Volume** - 500ml cartridge or bag
- **Low Ink Indicator** - Status alert on touchscreen, LED light beacon optional
- **Substrate Capabilities** - Porous or Non-Porous surfaces
- **Electrical Requirements** - 100 - 240 VAC, 50/60 Hz
- **Operating Environment** - 34°F - 104°F (1° - 40°C)
- **Agency Certifications** - CE, TUV, FCC

OPTIONAL ACCESSORIES

- **Encoder** - For operation with variable speed conveyors
- **Bar Code Laser Scanner** - Allows scan and print message retrieval
- **External Light Beacon** - Indicates low ink levels
- **Wireless USB Device and Router** - For wireless connectivity
- **Windows Tablet** - Pre-loaded with Orion software; includes mounting bracket with swivel arm, USB to ethernet cable and stylus
- **Conveyor Mounting Bracket** - Provides stable mount to conveyor or other material handling equipment
- **Floorstand** - Includes mounting brackets and legs with leveling feet; 59" (1.5m) total height
- **Pigmented Ink Agitation System** - Allows for printing with pigmented inks
- **Starter Kit** - Includes ink, cleaner and flush solution, printhead wipes, hand cleaner and latex gloves

ORION SOFTWARE SPECIFICATIONS

- **Time & Date** - Full time and date functionality including expiration date and Julian Dates.
- **Item Numbering** - Sixteen counters, one of which can be a daily counter and production counter
- **Shift Codes** - Four programmable shift codes with automatic rollover
- **Bar Codes** - All standard bar codes including 2D
- **Fonts** - Arial, Arial Bold, Arial International, Arial Monospaced, Courier, Tahoma Bold and Lucida resident fonts for use in variable data elements. Static elements in any Windows® font
- **Logos** - Most image files supported with Orion Graphical Interface Software
- **Printing Features** - Reverse, invert, rotate, repeat. Print on/off button
- **Message Length** - Up to 180" (4.5 m)
- **Number of Messages** - 4GB storage space will store approximately 1000+ messages
- **Ink Usage** - Shown in Orion™ PC Software
- **User Data Prompts** - Prompts for user input at start of print job by manual input on touchscreen
- **Bluetooth Connectivity** - For connectivity with Bluetooth keyboards
- **Wireless Connectivity** - For wireless connection between PC or tablet and printer controller
- **Database Capability** - Ethernet communication protocol for external communication
- **Languages** - English, Spanish, German, Chinese, Japanese, Korean, Russian



©2017 Squid Ink Manufacturing, Inc. Specifications subject to change. All trademarks are the property of their registered owners. HP is a registered trademark of Hewlett-Packard Development Company, L.P. Lexmark is a registered trademark of Lexmark International, Inc. Windows™ is a registered trademark of Microsoft Corporation in the United States and other countries.



7041 Boone Avenue North, Brooklyn Park, MN 55428
 (763) 795-8856 1 (800) 877-5658
 www.squidink.com info@squidink.com



ENGAGE technologies corporation